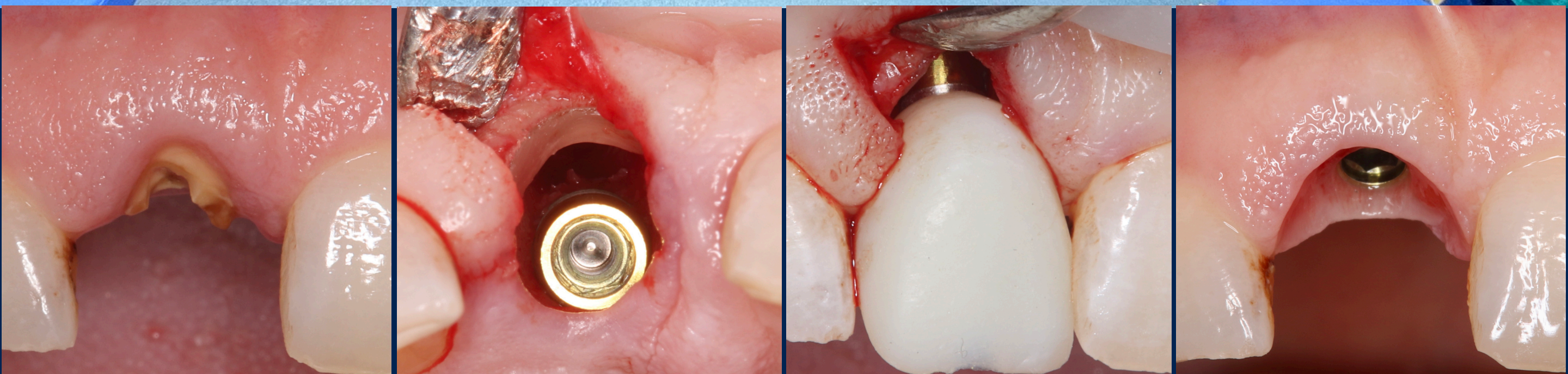


# Cadaver Course on Immediate Implants

“Socket grafting, Soft tissue grafting & Socket shield”



## Dr. Andoni Jones

Private practice in Dublin limited to dental implants and reconstructive surgery  
Author of several publications in International Journals

Book here

<https://jonesoralsurgerytraining.com>



18 CPD  
HOURS

12 places



## Immediate implants on Cadavers

### What is covered

- Indications and limitations to carry out immediate implants.
- To understand the expected bone and soft tissue resorption after tooth extraction in each case. Not all sockets are the same.
- Individualise the approach for each site understanding the available techniques to simplify the surgeries whilst maximising aesthetic results.
- Ideal 3D implant placement into an extraction socket.
- Socket grafting. When to perform, different biomaterials and rationale.
- Soft tissue grafting. Indications, execution. Predictable, safe and simple palatal tissue harvest.
- Socket shield/Root preservation techniques. Indications and contraindications, how to simplify the technique to minimise risks.
- Temporisation. Importance of temporary restoration for volume maintenance and soft tissue healing.

### Day 1:

- 9am to 5pm Theory and Clinical cases. Coffee and Lunch breaks.
- 8pm Course Dinner

### Day 2:

- 9am to 4.30pm Cadaver Lab.  
CBCT planning.  
Execute immediate implants, socket grafting & soft tissue grafting, socket shield and temporisation.

### What to expect?

- To fully understand each step of immediate implant placements to avoid complications and obtain the desired aesthetic outcomes.
- To understand the criteria for choosing the best technique for each case.
- Gain knowledge about the potential of Socket Shield/Root Preservation techniques to obtain unparalleled aesthetic outcomes.
- Clinical case presentations to facilitate learning and discussion with the speaker.
- Cadaver hands on session to practise each step involved in the execution of immediate implants (full or partial dental extraction, implant placement, hard & soft tissue management, temporisation).
- Become familiar with the instruments/materials needed to carry out socket grafting, soft tissue grafting and socket shield.
- CBCT analysis of the cadaver specimens by the delegates for diagnostic and planning purposes.

### Venue

West Midlands Surgical Training Centre,  
University Hospitals Coventry and  
Warwickshire, England.

### Course Fee

£3000/€3400



Book here

<https://jonesoralsurgerytraining.com>